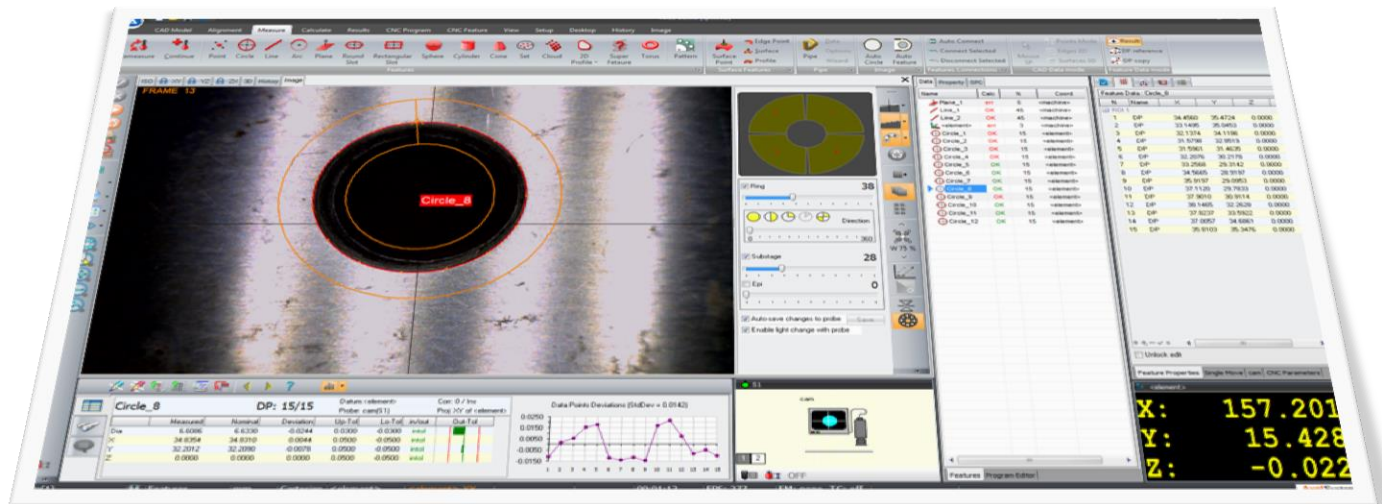


NEW! Inspection software for Video CMM Machines

AXEL 7

Video Inspection



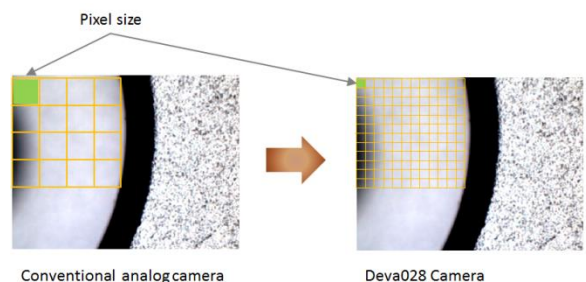
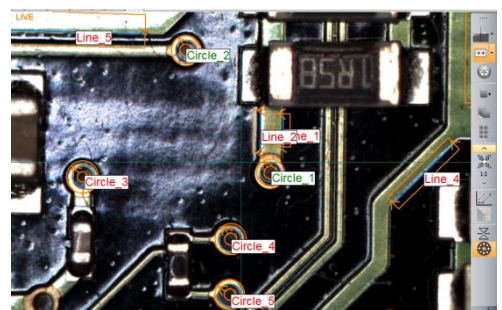
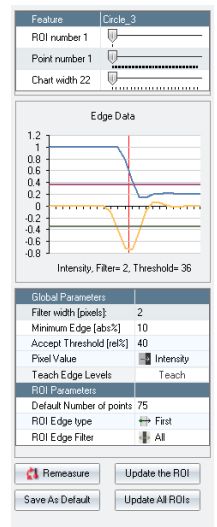
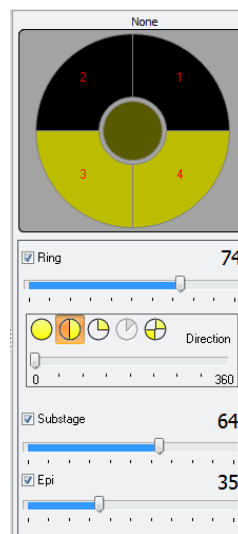
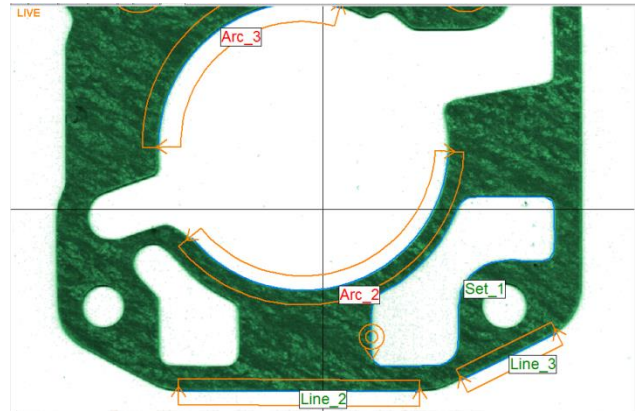
Applications:

- Manual Video Machines
- Automatic Video Machines
- Hybrid (Touch Probe and Video) CMM machines
- Retrofit of CMM machines

ADVANCED FEATURES MAKE AXEL EASY TO USE

Key features

- ❑ **Add-on module for Axel Software** – Vision software is available as an stand alone package for Video CMM machines or as an addition for our Axel Metrology Suite for CMM machine where Touch Probe and Image Probe are both installed.
- ❑ **Geometric Features** – full range of geometric inspection features measured with wide range of image tools.
- ❑ **Auto Feature** – one click operation to measure the range of features.
- ❑ **Adaptive Edge Detection Techniques** – Extensive set of edge detection tools is available. Automatic edge detection within defined ROI, auto edge points. Edge detection comes with tools and setups to deal with variety of surface finishes and lighting conditions.
- ❑ **AutoFocus** – Build in autofocus is offered for manual and automatic video systems to increase inspection accuracy.
- ❑ **Dual Screen Operation** – Video inspection can be configured for dual screen operation
- ❑ **Reverse Engineering** – features to reverse engineer parts with export to CAD packages.
- ❑ **Go-Mode** – Automatic Feature List program creation for repetitive running of inspection routines with user defined messages.
- ❑ Go mode auto view play to enhance feature inspection
- ❑ DDE / File / Serial Data export to SPC & Excel
- ❑ Export results to **MS Excel and HTML** with multiple templates
- ❑ User configurable, fully featured text & Graphical Report Generator



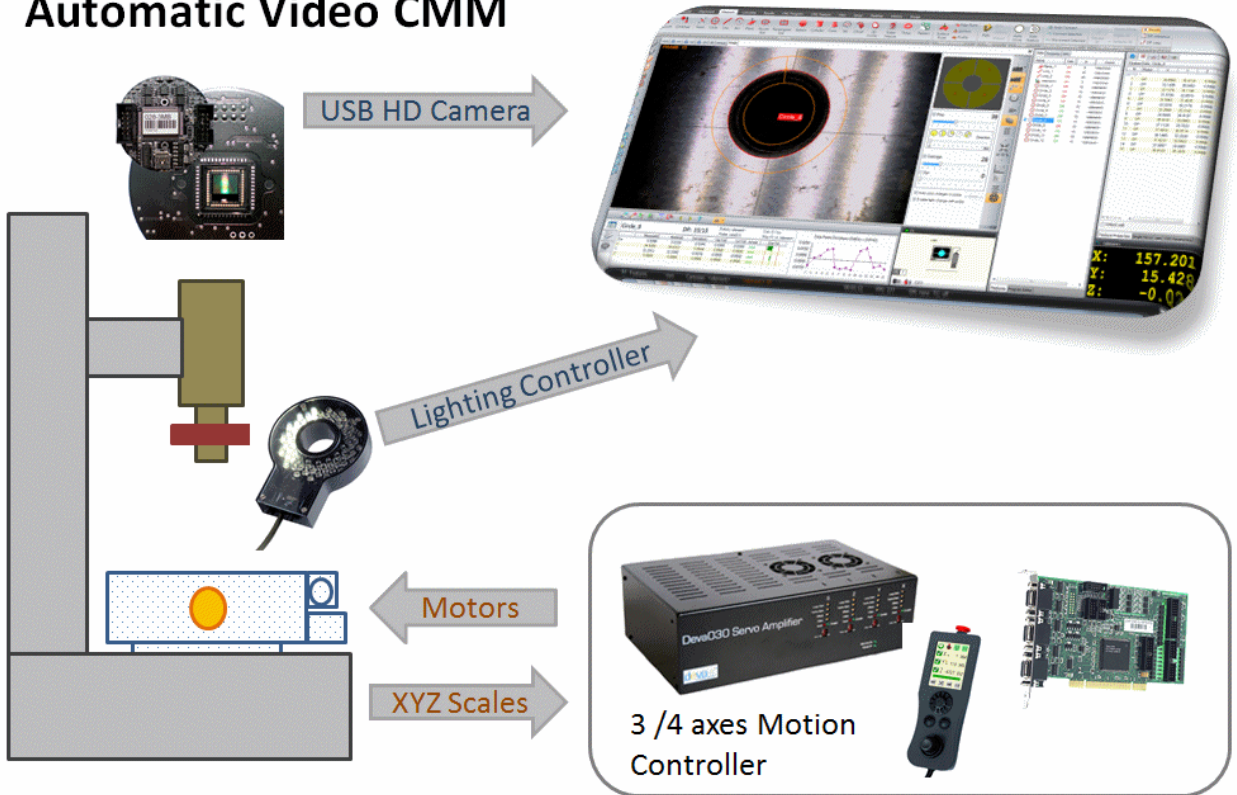
ADVANCED FEATURES MAKE AXEL EASY TO USE

The screenshot displays the AXEL DEMO software interface with several key components highlighted:

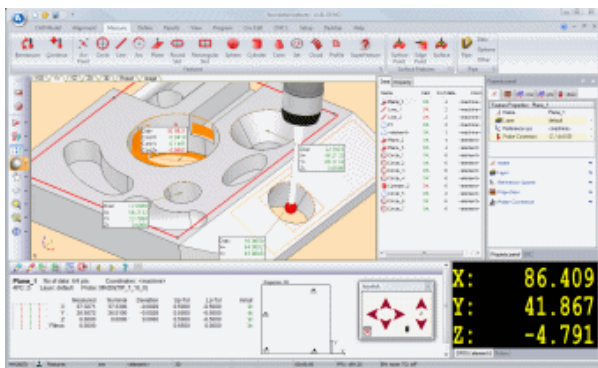
- Main Menu:** Located at the top, containing options like Measure, Calculate, Results, CNC Program, CNC Feature, View, Setup, Desktop, and History.
- Measure Window:** Shows a 3D model of a circular feature with a red circle labeled 'Circle_8' overlaid on a grayscale image of the part.
- Measure Window Properties:** A panel on the right showing a list of features (Plane_1, Line_1, etc.) and their properties.
- Results Window:** A table at the bottom left showing measurement data for 'Circle_8'.

| Axis | Measured | Nominal | Deviation | Up Tol. | Lo Tol. | In/Out | Out Tol. |
|------|----------|---------|-----------|---------|---------|--------|----------|
| Dia | 6.6306 | 6.6300 | -0.0044 | 0.0000 | -0.0000 | and | |
| X | 34.6354 | 34.6300 | -0.0044 | 0.0000 | -0.0000 | and | |
| Y | 32.2012 | 32.2000 | -0.0078 | 0.0000 | -0.0000 | and | |
| Z | 0.0000 | 0.0000 | 0.0000 | 0.0000 | -0.0000 | and | |
- Status Line:** A bar at the bottom showing 'mm Cartesian <element> <element> XY' and '00:01:12 FPS: 277'.
- Probe Window:** A window on the right showing a camera view of the probe tip and a 'cam' button.
- DRO Window:** A window at the bottom right displaying real-time coordinates: X: 157.201, Y: 15.428, Z: -0.022.

Automatic Video CMM

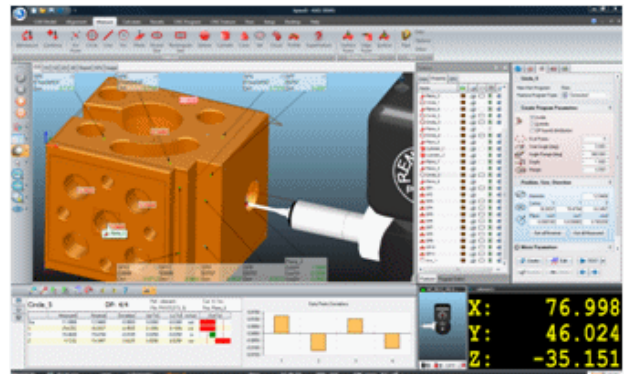


Other Packages available in Axel Range



Axel Foundation

Inspection on manual CMMs and Measuring Arms



Axel CNC

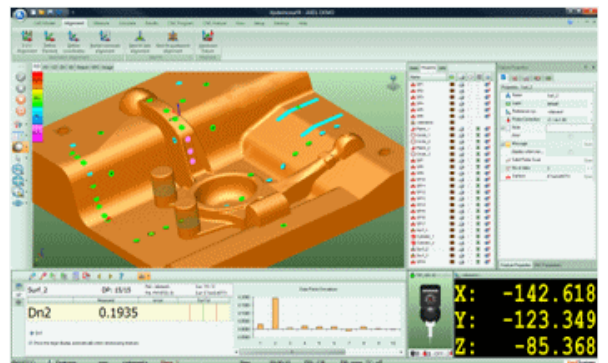
Inspection on automatic CMM and Video machines

OPTIONS



Axel Pipe

Inspection on manual CMMs and Measuring Arms



Axel Surface

Surface and Geometrical Inspection against CAD models

For sales information contact Axel Systems Ltd.

Tel: +44 (0) 208 1336999 or email sales@axelsystems.co.uk

AxelSystems

Copyright, 2013, Axel Systems Ltd, All rights reserved