

PORTABLE HARDNESS TESTER MH320



www.mitechworld.com



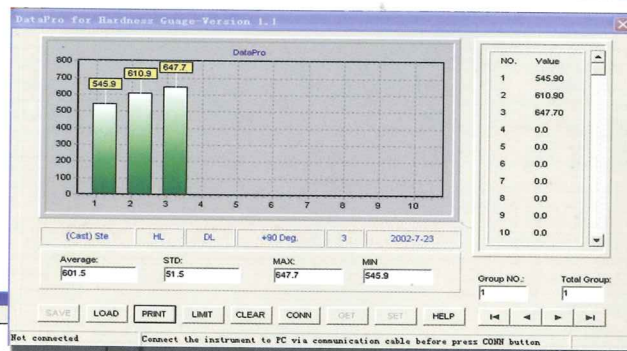
Features:

- MH320 is based on the model of MH310, better in accuracy and stability.
- Besides all functions of MH310, it is more excellent in capacity (500 groups).
- Dot-matrix LCD with adjustable backlight
- High-speed thermal Printer
- Types of impact devices auto-identification
- Upper/lower limits setting and alarm
- Memory of 128 data and statistics functions
- Advanced arithmetic and software
- Improved keypad and menu arrangement
- Intelligent power charging circuit
- Extended testing range

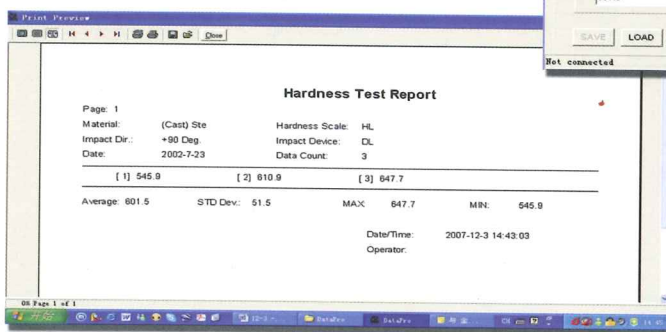
Main Display Interface :



Date Proceeding Software :



Test Report Of A4 Size:



- Save: Save data from the tester
- Load: Load data from the tester
- Print: Print the data out
- Limit: Preset the limitation
- Clear: Clear storage
- Connect(Disconnect): Set connection to PC
- Get: Get the data from the software storage
- Help: Answer your questions

Standard Configuration:

- | | | |
|----|----------------------|---|
| 1 | Main Unit | 1 |
| 2 | D type impact device | 1 |
| 3 | Standard test block | 1 |
| 4 | Cleaning brush | 1 |
| 5 | Small support ring | 1 |
| 6 | Battery charger | 1 |
| 7 | Paper for printing | 1 |
| 8 | PC software | 1 |
| 9 | Manual | 1 |
| 10 | Instrument case | 1 |

Available Type Of Impact Device:



- DC: Test hole or hollow cylindrical;
- DL: Tests slender narrow groove or hole
- D+15: Test groove or reentrant surface
- C: Test small, light, thin parts and surface of hardened layer
- G: Test large, thick, heavy and rough surface steel
- E: Test super high hardness material